

WOODAN Cask marks

HOW TO USE THIS DATABASE

By: Jeroen Oosterbaan

Version: 2024-06-27

Table of Contents

1	SEARCH OPTIONS	1
	CASK MARK TYPE	2
1.1	CONSTRUCTION MARK	2
1.2	COUNT MARK	3
1.3	GAUGE MARK	3
1.4	PROPERTY MARK: COOPERS' MARK	4
1.5	PROPERTY MARK: MERCHANTS' MARK	4
1.6	PROPERTY MARK: OTHER MARK	5
2	TABS	6
2.1	IMAGES	6
2.2	TABLES.....	6
2.3	MAPS.....	6
3	ADD MARKS TO DATABASE	6
4	COLOPHON	6
5	DESCRIPTION OF THE FIELDS	7

1 Search options

WOODAN Cask marks has been set up to provide an overview of marks on casks and to enable specific searches for particular marks on casks using their associated specifications. A description of the fields is provided under the heading "Description of the fields". You can search by characteristics of the mark, the date of the mark or the design of the mark.

Characteristics of the mark:

- ID Cask mark (Id number of a specific cask mark)
- Town (in which the mark was found)
- Associated product (Dry goods: food, merchandise. Wet goods: Alcoholics, drinks foodstuffs)
- Mark location on cask (Head: inside, Head: outside, Bilge bottom, Bilge center, Bilge center near hole, Unknown, Does not apply)
- Type of mark (Construction Marks, Count mark, Property mark, Gauge mark, Unknown type)
- Context type (Maritime, Urban, Archival source, Countryside)
- Method of application (Timber scribe, Knife, Branding iron, Compass, Painted mark, Ink, Strike mark, Tiber scribe or knife, Unknown)

The date of the mark:

- Startdate and enddate of context



- Startdate and enddate of dendrochronological analyses
- Startdate and enddate of archival source

The design of the mark:

Each mark can be divided into specific elements. These elements can be entered separately into a search field, allowing for easy searching of similarly designed marks. For instance, a hashtag symbol (#) can be searched for by entering “2” in the field Horizontal stripes and “2” in the field Vertical stripes. The search field options are: Horizontal stripes, Vertical stripes, Diagonal stipes, Waving lines, Circles, Half Circles, Dots, Crosses, Numbers, Figures, V-Shapes, W-Shapes and Letters.

Cask mark type

To understand the use and significance of these marks, several types of cask marks were distinguished. These types are categorized based on their intended purpose. The marks served various functions, ranging from quantification and indicating ownership to the gauge or production process. The following types of cask marks have been distinguished:

1.1 Construction mark

The construction marks were applied during the production phase or repair of the casks by the cooper (Fig. 1). These marks are found on the bilge or heads of a cask and are usually of a relatively simple design. By marking lines when laying out the staves or head parts, it becomes easy to return a component to its correct place. This type of marking was often made with a knife, though in some cases, a timber scribe was used.



Figure 1: An example of a V shaped construction mark on a head (ID0428).



1.2 Count mark

The count was used to quantify casks or the load they carried (Fig. 2). The design of this cask mark type consists of a system of lines and cross lines. The combination of these lines indicates a number. The count marks are usually applied with either a knife or timber scribe on the bilge of exterior of a head.



Figure 2: An example of a count mark on a stave (ID0777).

1.3 Gauge mark

The gauge mark served to show that an independent party had verified the prescribed specifications of the cask, the volume of the content or the correct handling of the contents of the cask. This cask mark type was mostly applied with a timber scribe on the bilge near the bung hole.

The design of the gauge mark varies depending on the transported product. For instance, wine gaugers marks were detailed because the amount of wine in the barrel was indicated in the gauge mark (Fig. 3_1). For herring casks, the gauge marks could consist of a series of circles (Fig. 3_2). When inspecting the specifications of the barrel as packaging material, a mark from the inspector or the city where the gauging process was carried out was usually placed on the barrel (Fig. 3_3).



Figure 3: Three examples of gauge marks, 1: wine gauge mark (ID0340), 2: gauge mark on herring cask (ID0584), 3: gauge mark of the city of Leiden (ID0417).



1.4 Property mark: Coopers' mark

This mark is applied by the cooper after the cask's production process is complete. It serves to quantify the cooper's production and to trace the producer in case of a poorly made cask. The cooper's mark was applied using either a timber scribe or, in some cases, with a knife. This cask mark type, is placed on the inside or outside of the heads of bilge (Fig. 4). The design is consists of a monogram or simple combination of lines or circles.



Figure 4: A cooper's mark on the inside of head (ID0641).

1.5 Property mark: Merchants' mark

The merchants' mark was applied by the producers of the packaged merchandise or the intermediary who traded them. This type of mark was usually applied with a timber scribe and was placed on the outside of the head or bilge. The design of the merchant's marks was often linked to the merchant, as they typically included a monogram made from the merchant's initials. This cask mark type was applied with a timber scribe, branding iron, strike mark or paint.



Figure 5: An example merchants marks on a head applied with a timber scribe and paint (ID0144).



1.6 Property mark: Other mark

Property marks that cannot be interpreted as merchant's mark or cooper's mark fall into the category of "Other Property Marks." This category includes marks that can be linked to a producing organization, such as a brewery (Fig. 5). This cask mark type was placed on the outside of the head or bilge using timber scribe, branding iron, strike mark or paint. The design of the mark varies greatly.

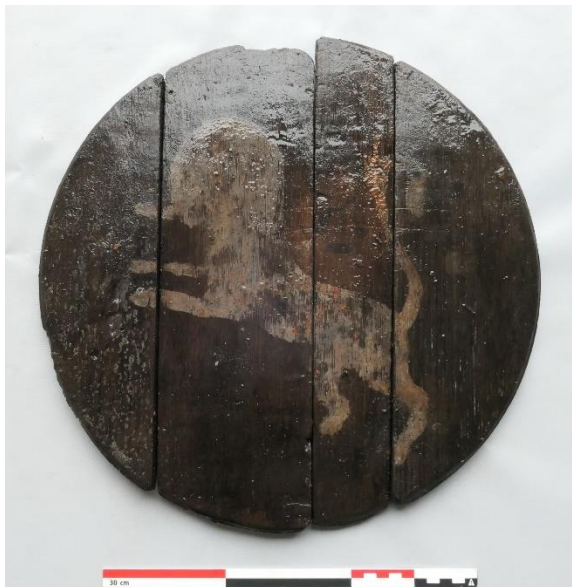


Figure 6: An example of a painted property mark of a brewery (ID0392).



2 Tabs

2.1 Home

This is the homepage where you can find search fields for the characteristics, date, or design of the mark. The search results will display an image of the mark along with its type and the ID number of the cask mark.

By clicking on any individual cask mark, you can select it. Upon selection, you will be directed to a page displaying all the available information for that particular mark. Often, not every field will have data. By using the 'Show empty fields' option, you can choose to display these fields or keep them hidden.

2.2 Tables

The table tab displays the search results in a tabular format. By default, the table shows the ID number, image, type of cask mark, location of the mark on the cask, method of application, associated product, context type and the municipality where the mark was found. The search field at the top of this tab allows you to search across all available fields in the database, so also fields that aren't shown in the table tab display.

2.3 Maps

The maps tab displays the search results on a map, with each icon representing an individual cask mark. It is advisable to zoom in closely, as many of the cask marks were found in close proximity, causing the icons to often overlap.

3 Add marks to database

New marks can be added to WOODAN Cask marks by completing the input file downloadable from this link. This file can be sent to info@woodan.org. These data will be verified by one of the involved researchers to ensure the reliability of the information in WOODAN Cask marks. After this verification, the data will be made available online.

4 Colophon

The development of Woodan Cask marks has been supported by a grant from the *Samenwerkende Maritieme Fondsen* (<https://www.samenwerkendemaritiemefondsen.nl/>).

WOODAN Cask marks is connected to the article: Oosterbaan, J. (in preparation). Marks on Casks.

The database model was made by Jeroen Oosterbaan. Data entry was done by Liam Tran, Wouter Donders and Jeroen Oosterbaan.



5 Description of the fields

All fields of WOODAN Cask marks are listed in the table below, along with their descriptions, possible options, and field types.

Field name	Field type	Options	Dutch translation	Remark	Field shown in Home tab	Field shown in Tables tab
Cask mark type	Drop-down list		Type tonmerk		x	x
		Construction mark	Constructiemerk			
		Count mark	Telmerk			
		Property mark: Coopers' mark	Eigendomsmerk: Kuipersmerk			
		Property mark: Merchants' mark	Eigendomsmerk: Handelaarsmerk			
		Property mark: Other mark`	Eigendomsmerk: Overig			
		Gauge mark	IJKmerk			
		Unknown type	Onbekend type			
		Unknown / not filled in	Onbekend / niet ingevuld			
ID-Barrelmark	Numeric, integer		ID		x	x
Mark location on cask	Drop-down list		Locatie van tonmerk (op de ton)		x	x
		Head: inside	Bodem: binnenkant			
		Head: outside	Bodem: Buitenkant			
		Bilge bottom	Buik onderkant			
		Bilge center	Buik centraal			
		Bilge center near hole	Buikcentraal bij gat			
		Unknown	Onbekend			
		Does not apply	Niet van toepassing	Example: marks from archival sources		
Method of application	Drop-down list		Wijze van aanbrengen		x	x
		Timber Scribe	Ritsmes			
		Knife	Mes			
		Branding iron	Brandmerk			
		Compass	Passer			
		Painted mark	Geschilderd merk			
		Ink	Inkt			
		Timber scribe or knife	Ritsmes of mes	When not clear if the mark was		



				placed by either a timber scribe or knife		
		Strike mark	Slagstempel			
		Unknown	Onbekend			
Mark over number of staves	Numeric, integer		Over aantal duigen			
Height (mm)	Numeric, integer		Hoogte (mm)	Length of the mark measured along the length of the stave		
Width (mm)	Numeric, integer		Breedte (mm)	Width of the mark measured along the width of the stave		
Complete cask mark?	Yes / No		Compleet merkteken?			
Context (project name)	Text		Naam onderzoek			
Context type	Drop-down list		Context type		x	x
		Maritime	Maritiem			
		Urban	Stadskern			
		Archival source	Archiefbron			
		Countryside	Buitengebied			
		Unknown	Onbekend			
Town	Text		Plaats		x	x
LongRDX	Numeric, integer		Coördinaat (Longitude, lengtegraad)			
LatRDY	Numeric, integer		Coördinaat (Latitude, breedtegraad)			
Specialist	Text		Specialist (naam)	Name of the specialist who checked or entered the data		
Associated product	Drop-down list		Geassocieerd vervoerd product		x	x
		Dry goods, Food, Other food	Droge waar, Etenswaar, Etenswaar overig			
		Dry goods, Food, Cereals	Droge Waar, Etenswaar, Granen			
		Dry goods, Food, Vegetable	Droge waar, Etenswaar, Groente			
		Dry goods, Food, Herring	Droge waar, Etenswaar, Haring			
		Dry goods, Food, Nuts	Droge waar, Etenswaar, Noten			
		Dry goods, Food, Oil	Droge waar, Etenswaar, Olie			
		Dry goods, Food, Spice	Droge waar, Etenswaar, Specerij			
		Dry goods, Food, Fish other	Droge waar, Etenswaar, Vis overig			
		Dry goods, Food, Meat	Droge waar, Etenswaar, Vlees			



		Dry goods, Food, Fruit	Droge waar, Etenswaar, Vrucht			
		Dry goods, Food, Mollusc	Droge waar, Etenswaar, Weekdieren			
		Dry goods, Food, Seeds	Droge waar, Etenswaar, Zaden			
		Dry goods, Food, Salmon	Droge waar, Etenswaar, Zalm			
		Dry goods, Food, Dairy food	Droge waar, Etenswaar, Zuivelproduct			
		Dry goods, Merchandise, Fuel	Droge waar, Handelswaar, Brandstof			
		Dry goods, Merchandise, Other raw material	Droge waar, Handelswaar, Grondstof overig			
		Dry goods, Merchandise, Other merchandise	Droge waar, Handelswaar, Handelswaar overig			
		Dry goods, Merchandise, Gunpowder	Droge waar, Handelswaar, Kruit			
		Dry goods, Merchandise, Cloth	Droge waar, Handelswaar, Laken			
		Dry goods, Merchandise, Metals	Droge waar, Handelswaar, Metalen			
		Dry goods, Merchandise, Stone	Droge waar, Handelswaar, Natuursteen			
		Dry goods, Merchandise, Pitch	Droge waar, Handelswaar, Pek			
		Dry goods, Merchandise, Tobacco	Droge waar, Handelswaar, Tabak			
		Dry goods, Merchandise, Tar	Droge waar, Handelswaar, Teer			
		Dry goods, Merchandise, Soap	Droge waar, Handelswaar, Zeep			
		Wet goods, Alcoholics, Beer	Natte waar, Alcoholische dranken, Bier			
		Wet goods, Alcoholics, Other distilled drinks	Natte waar, Alcoholische dranken, Gedestilleerd overig			
		Wet goods, Alcoholics, Mead	Natte waar, Alcoholische dranken, Mede			
		Wet goods, Alcoholics, Wine	Natte waar, Alcoholische dranken, Wijn			
		Wet goods, Drinks, Water	Natte waar, Dranken, Water			
		Wet goods, Foodstuffs, Vinegar	Natte waar, Etenswaar, Azijn			
		Wet goods, Foodstuffs, Other foodstuffs	Natte waar, Etenswaar, Etenswaar overig			
		Wet goods, Foodstuffs, Dairy product	Natte waar, Etenswaar, Zuivelproduct			
		Wet goods, Textile industry, Other	Natte waar, Textielindustrie, Overig			
Tranche ID	Numeric, integer		Werkputnummer			
Feature ID	Numeric, integer		Spoornummer			
Find ID	Numeric, integer		Vondstnummer			



WOODAN ID	Numeric, integer		WOODAN ID	Link to WOODAN site		
Archis ID	Numeric, integer		Archis-nummer			
Date context start	Numeric, integer		Datering context, start		x	
Date context end	Numeric, integer		Datering context, einde		x	
Date history start	Numeric, integer		Datering archiefbron, start			
Date history end	Numeric, integer		Datering archiefbron, einde			
Date dendro start	Numeric, integer		Datering dendro, start		x	
Date dendro end	Numeric, integer		Datering dendro, einde		x	
Provenance	Drop-down list		Herkomst hout			
		Rhineland	Rijnland			
		Meuse valley / Germany	Maasvallei / Duitsland			
		North German plane	Noord-Duitse Laagvlakte			
		Poland	Polen			
		Baltic region	Balticum			
		Southern Scandinavia	Zuid-Scandinavië			
		England	Engeland			
		France	Frankrijk			
		France, Loire valley	Frankrijk, Loirevallei			
		France, Burgundy	Frankrijk, Bourgogne			
		Liechtenstein	Liechtenstein			
		Tropical hardwood	Tropisch hardhout			
		Eastern Poland / Belarus	Oost-Polen / Wit-Rusland			
		Belgium	België			
		Unclear	Onduidelijk			
		Not determined	Niet bepaald			
Sapwood	Yes / No		Spinhout aanwezig?			
Dendro Dataverse	Numeric, integer		Dendro dataverse nummer	Link to dataverse site		
Associated Person Name	Text		Geassocieerd persoon, naam			
Associated Function Name	Text		Geassocieerde functie, naam			
Reference	Text		Bronvermelding		x	
Remarks	Text		Opmerkingen			
Horizontal stripes	Numeric, integer		Horizontale strepen		x	
Vertical Stripes	Numeric, integer		Verticale strepen		x	
Diagonal stripes	Numeric, integer		Diagonale strepen		x	
Waving lines	Numeric, integer		Wavinge lenen		x	



Circles	Numeric, integer		Cirkels		x	
Half Circles	Numeric, integer		Halve cirkels		x	
Dots	Numeric, integer		Punten		x	
Crosses	Numeric, integer		Kruizen		x	
Numbers	Numeric, integer		Nummers		x	
Figures	Numeric, integer		Figuren		x	
V-shapes	Numeric, integer		V-vormen		x	
W-shapes	Numeric, integer		W-vormen		x	
Letters	Text		Letters		x	

